

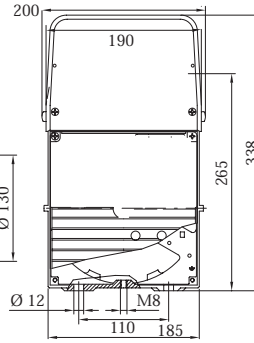
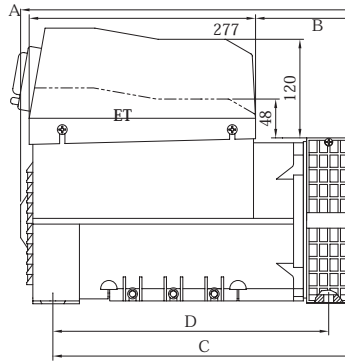
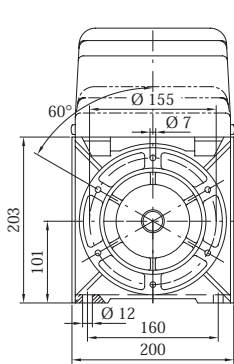
3 Phase

2 Pole

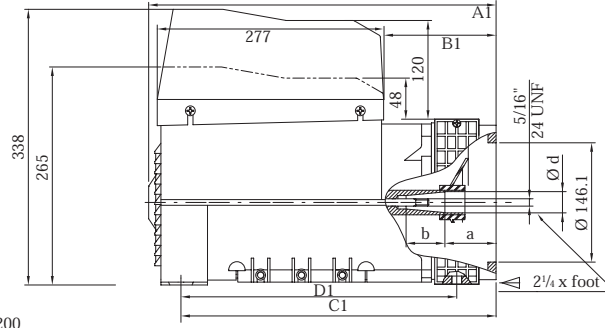
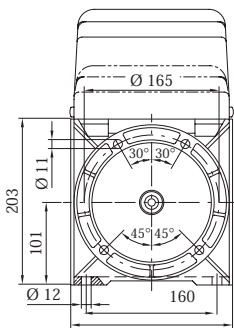
ET

TECHNICAL DATA

MODEL	60 Hz - 3600 r.p.m.		50 Hz - 3000 r.p.m.		Weight (kg)	OVERALL DIMENSIONS									
	POWER (kVA)	η 4/4 cos ϕ =0.8	POWER (kVA)	η 4/4 cos ϕ =0.8		2 Bearing					J609b				
		(%)		(%)		A	A'	B	C	D	A1	A1'	B1	C1	D1
ET2MAS	5	73.5	4	73	25.1	358	365	69	315	283	374	381	85	331	283
ET2MBS	6.9	76	5.5	75	28.3	358	365	69	315	283	374	381	85	331	283
ET2MCS	9	79	7	78	32.3	358	365	69	315	283	374	381	85	331	283
ET2LAS	10.5	82	8.5	81	36.8	413	420	124	370	338	429	436	140	386	338
ET2LBS	13	84	10	83	41.2	413	420	124	370	338	429	436	140	386	338
ET2MAF	5(3~)/2.7(1~)	75	4(3~)/2.2(1~)	75	25.1	358	365	69	315	283	374	381	85	331	283
ET2MBF	6.9(3~)/4(1~)	78	5.5(3~)/3.2(1~)	77	28.3	358	365	69	315	283	374	381	85	331	283
ET2MCF	9(3~)/5.2(1~)	81	7(3~)/4(1~)	80	32.5	358	365	69	315	283	374	381	85	331	283
ET2LAF	10.5(3~)/6.3(1~)	84	8.5(3~)/5(1~)	83	36.8	413	420	124	370	338	429	436	140	386	338
ET2LBF	13(3~)/7.5(1~)	86	10(3~)/6(1~)	85	41.2	413	420	124	370	338	429	436	140	386	338



2 BEARING B3/B14

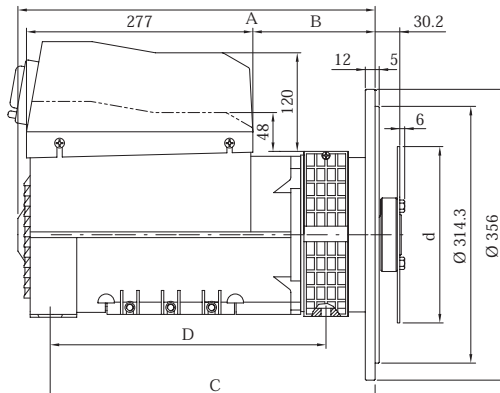
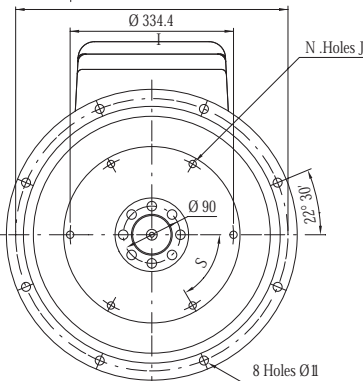


J609b

Shaft Taper	d	a	b	cod.
22.14	22.14	81	32	D
25.4	25.4	63.5	49.5	D
35	30	39	72	F

SAE 5

SAE	L	d	I	N.Holes	J	S
	6.5	30.2	215.9	200	6	9
7.5	30.2	241.3	222.2	8	9	45°



Model	J609b Taper 35				
	A	A'	B	C	D
ET2M--	386	393	97	343	283
ET2L--	441	448	152	398	338