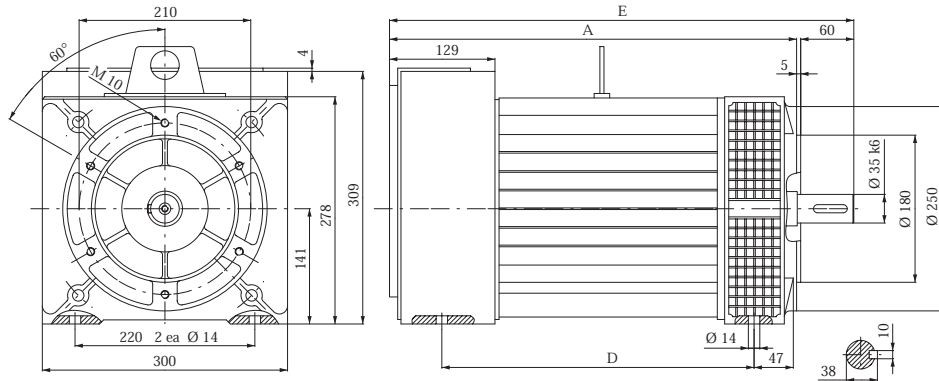
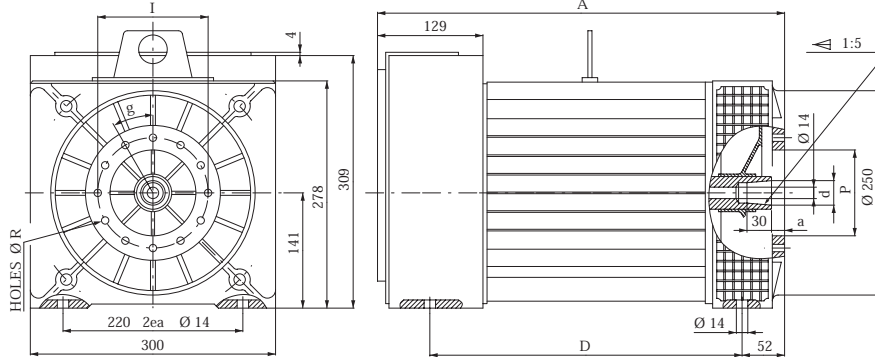


Overall dimensions



STYLE B3/B14 cod. E

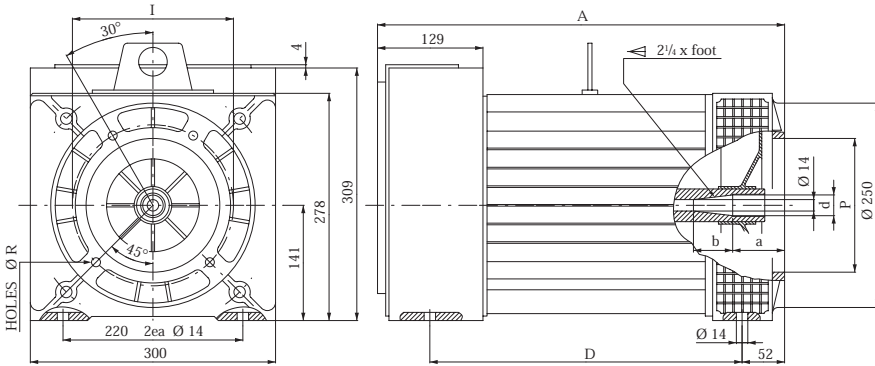
Type	A	D	E
KS-L	597	481	662
KS-LL / GS-LL	642	526	707



B3/B9 cod. ...

Type	A	D
KS-L / GS-L	592	481
LL	642	526

Shaft		Bell - Housing				cod.
d	a	I	p	Holes	R	g
30	16	135	105	12	9	30°
38	5	150	125	4	12	90°

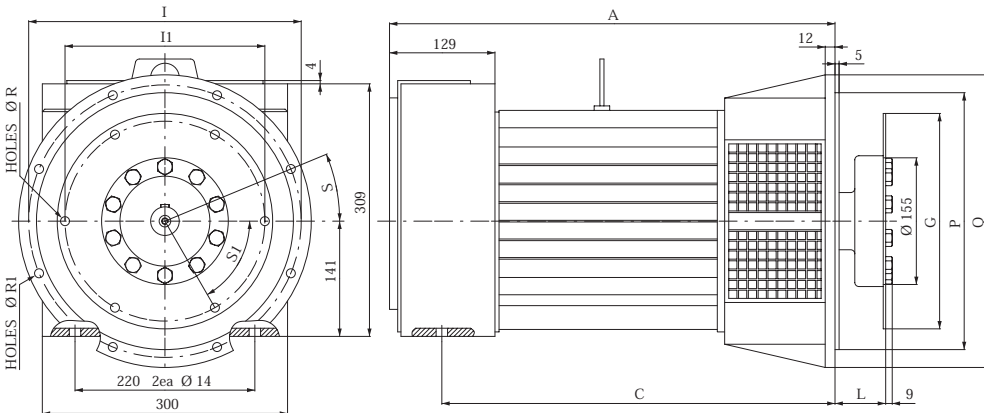


J609b cod. ...

Type	A	D
KS-L / GS-L	592	481
LL	642	526

Shaft			cod.
d	a	b	
25.4	63.5	48	D
35	12.4	71	F

Bell - Housing			
I	p	Holes	R
165	146.1	4	11
197	163.6	4	11
197	177.8	4	11



SAE

Type	A	C
KS-L / GS-L	644	580
LL	699	625

Bell - Housing						
SAE	Q	P	I	Holes	R1	S
3	452	409.6	428.6	12	11	15°
4	405	362	381	12	11	15°
5	358	314.3	333.4	8	11	22°30'

Drive Plate						
SAE	L	G	I1	Holes	R	S1
6.5	30.2	215.9	200	6	9	60°
7.5	30.2	241.3	222.2	8	9	45°
8	62	263.5	244.5	6	11	60°
10	53.8	314.3	295.3	8	11	45°
11.5	39.6	352.4	333.4	8	11	45°